

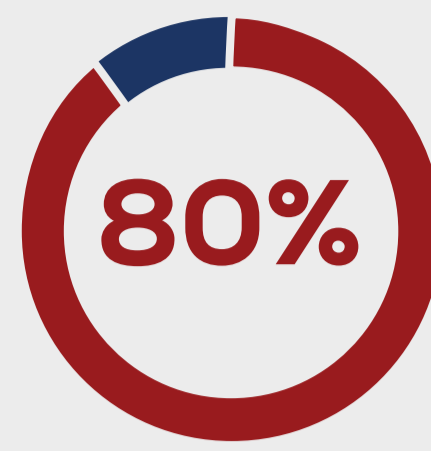
# HRSA DELIVERS FOR WOMEN'S HEALTH

## Access to Health Care

Data Sources: BPHC, DOL

**10.9 MILLION**

**WOMEN (18 YEARS AND OLDER)** were served at HRSA-funded health centers in 2016.<sup>1</sup>



**OF WOMEN** make family health care decisions - but many go without coverage themselves.<sup>2</sup>



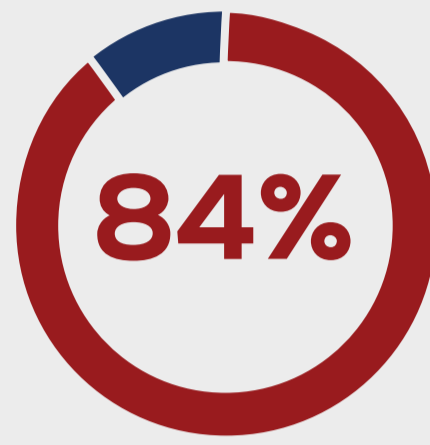
<sup>1</sup> Bureau of Primary Health Care (BPHC), Uniform Data System (UDS), 2016: <https://bphc.hrsa.gov/uds/datacenter.aspx>

<sup>2</sup> U.S. Department of Labor <https://www.dol.gov/sites/default/files/ebsa/about-ebsa/our-activities/resource-center/fact-sheets/women-and-job-based-health.pdf>

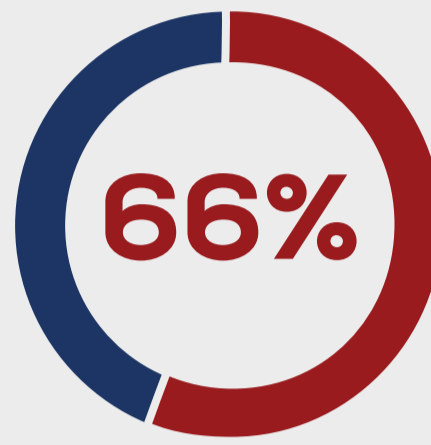
## Maternal Health

Data Sources: MCHB, BPHC

In the Title V MCH Block Grant Program:

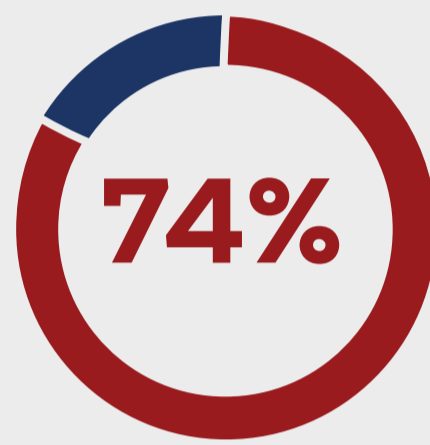


**OF ALL PREGNANT WOMEN** in the U.S. were served in 2016 as reported by the states.<sup>1</sup>

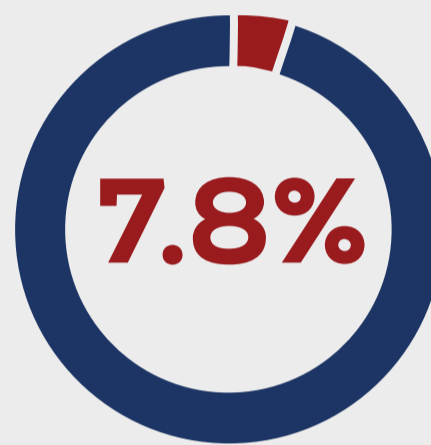


**OF WOMEN (AGES 18 THROUGH 44)** had a past-year preventive medical visit in 2015.<sup>2</sup>

In HRSA-funded Health Centers



**OF PREGNANT WOMEN** received prenatal care during their first trimester.<sup>3</sup>



of patients had **LOW BIRTH WEIGHT DELIVERIES** - meeting the Healthy People 2020 Goal of 7.8%.<sup>3</sup>



<sup>1</sup> Maternal and Child Health Bureau, Title V Maternal and Child Health Services Block Grant Program

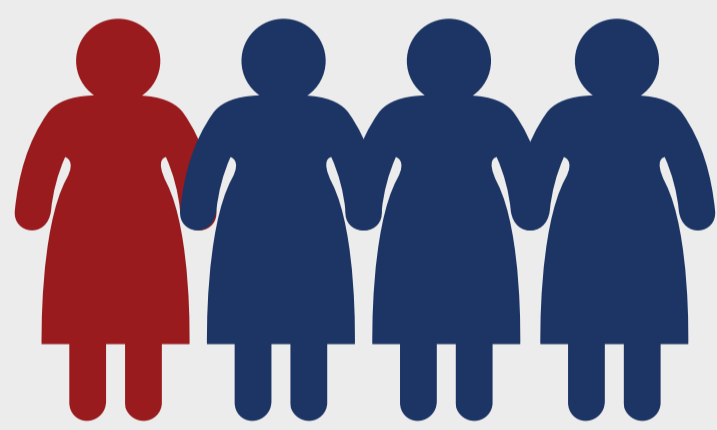
<https://mchb.hrsa.gov/maternal-child-health-initiatives/title-v-maternal-and-child-health-services-block-grant-program>

<sup>2</sup> Maternal and Child Health Bureau, Title V Information System (TVIS) Data <https://mchb.tvিসdata.hrsa.gov/PopulationDomain/Detail/WomenMaternalHealth>

<sup>3</sup> Bureau of Primary Health Care (BPHC), Uniform Data System (UDS), 2016: <https://bphc.hrsa.gov/uds/datacenter.aspx>

## Domestic Violence

Data Sources: CDC, MCHB

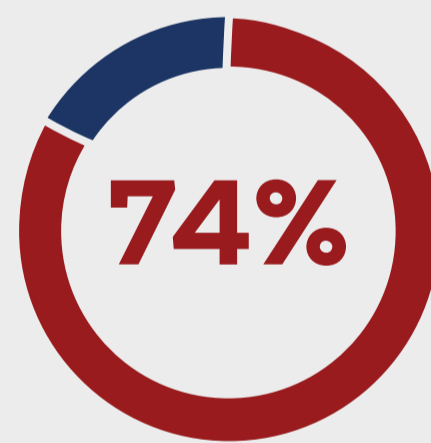


**1 IN 4 WOMEN** experience intimate partner violence (IPV) at some point in their lives.<sup>1</sup>

Maternal, Infant and Early Childhood Home Visiting (MIECHV) Program

**4.2 MILLION**

**HOME VISITS** which may help address IPV - were provided between FY 12 and FY 17.<sup>2</sup>



**OF MIECHV CAREGIVERS** were screened for IPV within 6 months of enrollment in FY 17.<sup>2</sup>



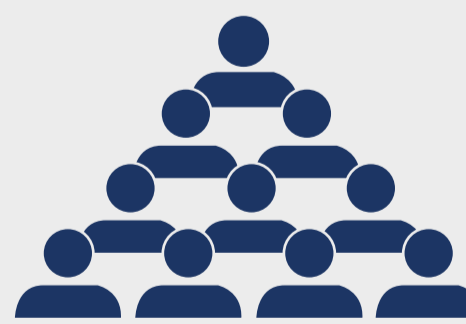
<sup>1</sup> Centers for Disease Control and Prevention: <https://www.cdc.gov/violenceprevention/intimatepartnerviolence/consequences.html>

<sup>2</sup> Maternal and Child Health Bureau Home Visiting Data: <https://mchb.hrsa.gov/sites/default/files/mchb/MaternalChildHealthInitiatives/HomeVisiting/pdf/programbrief.pdf>

## Cancer Prevention

Data Source: BPHC

In Calendar Year 2016



**561,269 PATIENTS** received mammograms at HRSA-funded health centers.<sup>1</sup>



More than **1.9 MILLION PATIENTS** received Pap smears at HRSA-funded health centers.<sup>1</sup>



<sup>1</sup> Bureau of Primary Health Care (BPHC), Uniform Data System (UDS), 2016: <https://bphc.hrsa.gov/uds/datacenter.aspx>

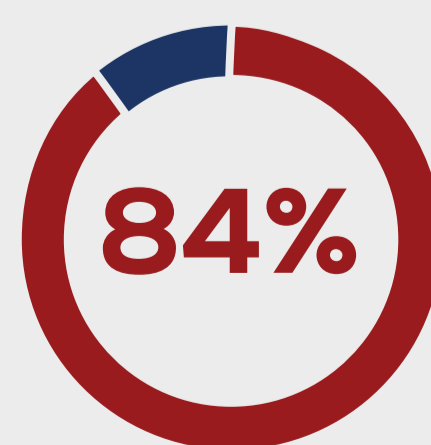
## HIV/AIDS Care & Treatment Services through the Ryan White HIV/AIDS Program

Data Source: HAB

In Calendar Year 2016

**147,480**

Ryan White HIV/AIDS Program clients were **FEMALE**.<sup>1</sup>



Of **FEMALE** Ryan White HIV/AIDS Program clients receiving HIV medical care were **VIRALLY SUPPRESSED**.<sup>1</sup>



<sup>1</sup> Ryan White HIV/AIDS Program Annual Client-Level Data Report, 2016. <https://hab.hrsa.gov/data/data-reports>

#NWHW

To learn more, visit [www.hrsa.gov/about/organization/bureaus/owh](http://www.hrsa.gov/about/organization/bureaus/owh)

**HRSA**  
Health Resources & Services Administration