

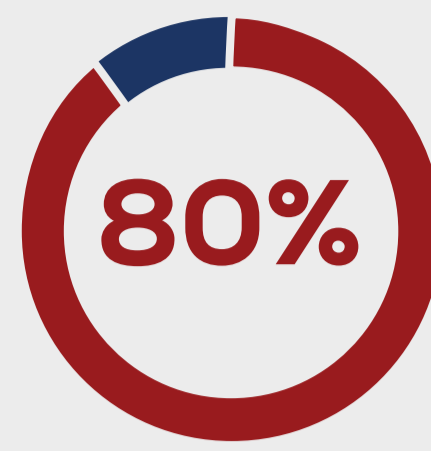
HRSA DELIVERS FOR WOMEN'S HEALTH

Access to Health Care

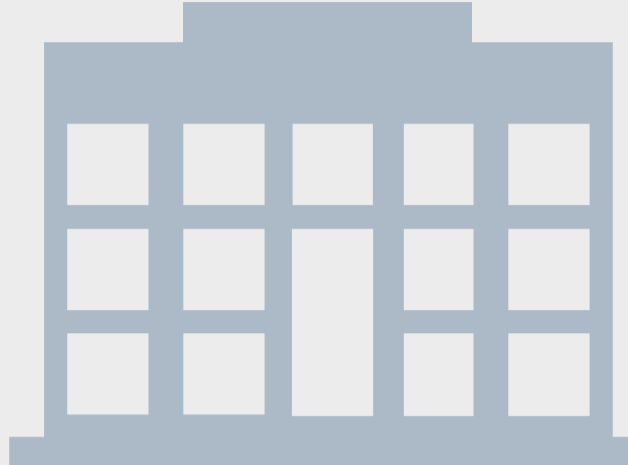
Data Sources: BPHC, DOL

11.5 MILLION

WOMEN (18 YEARS AND OLDER) were served at HRSA-funded health centers in 2017.¹



OF WOMEN make family health care decisions - but many go without coverage themselves.²



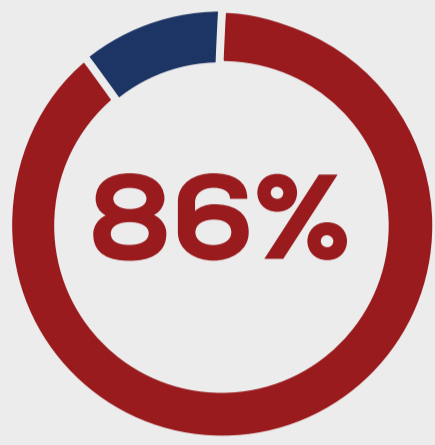
¹ Bureau of Primary Health Care (BPHC), Uniform Data System (UDS), 2017: <https://bphc.hrsa.gov/uds/datacenter.aspx>

² U.S. Department of Labor <https://www.dol.gov/sites/default/files/ebsa/about-ebsa/our-activities/resource-center/fact-sheets/women-and-job-based-health.pdf>

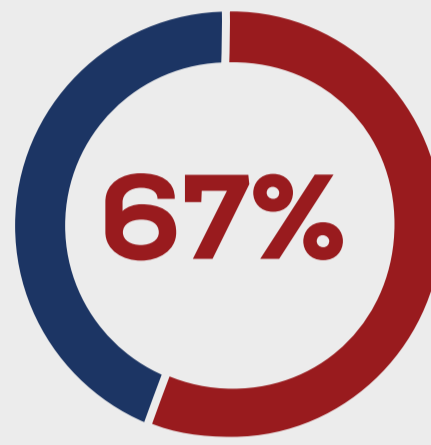
Maternal Health

Data Sources: MCHB, BPHC

In the Title V MCH Block Grant Program:

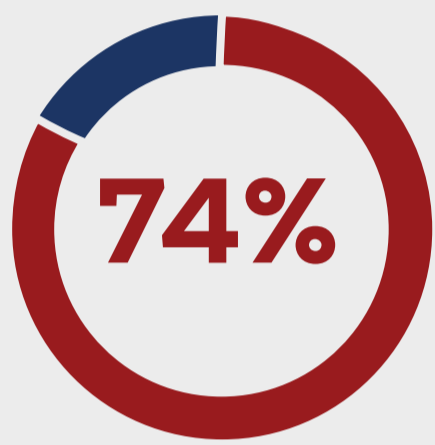


OF ALL PREGNANT WOMEN in the U.S. were served in 2017 as reported by the states.¹

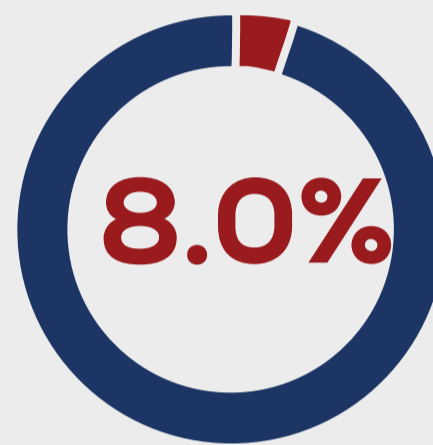


OF WOMEN (AGES 18 THROUGH 44) had a past-year preventive medical visit in 2016.¹

In HRSA-funded Health Centers



OF PREGNANT WOMEN received prenatal care during their first trimester.²

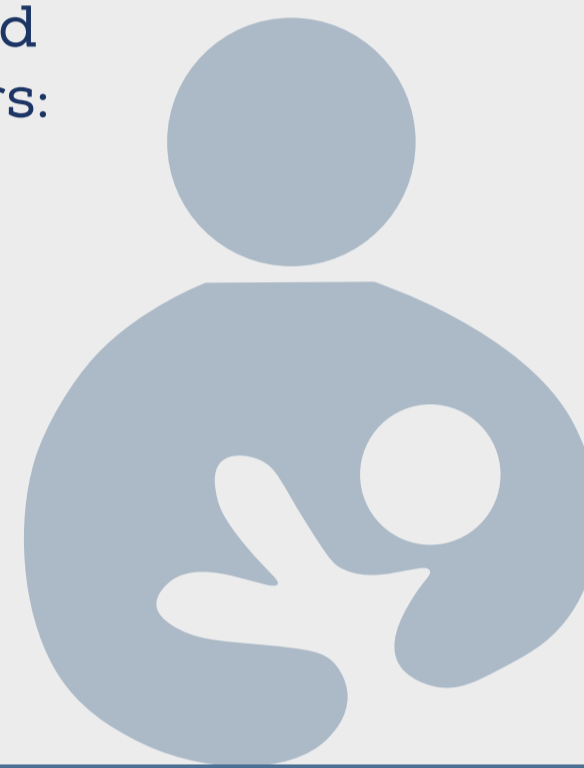


of patients had **LOW BIRTH WEIGHT DELIVERIES.**²

Total deliveries performed by health center providers:

2016: **178,587**

2017: **178,049²**

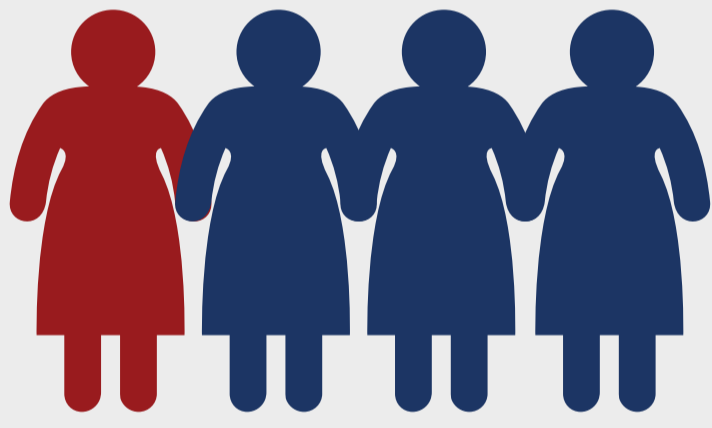


¹ Maternal and Child Health Bureau, Title V Information System (TVIS) Data <https://mchb.tvisdata.hrsa.gov/PopulationDomain/Detail/WomenMaternalHealth>

² Bureau of Primary Health Care (BPHC), Uniform Data System (UDS), 2017: <https://bphc.hrsa.gov/uds/datacenter.aspx>

Domestic Violence

Data Sources: CDC, MCHB

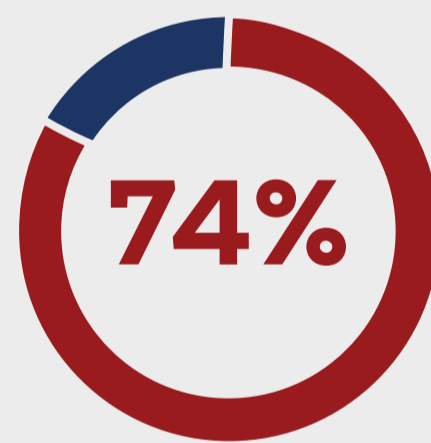


1 IN 4 WOMEN experience intimate partner violence (IPV) at some point in their lives.¹

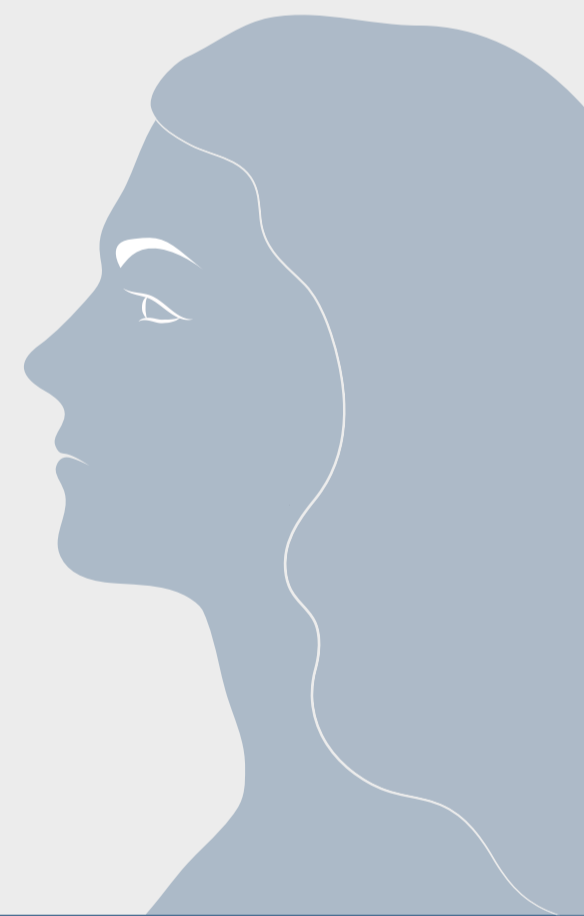
Maternal, Infant and Early Childhood Home Visiting (MIECHV) Program

4.2 MILLION

HOME VISITS which may help address IPV - were provided between FY 12 and FY 17.²



OF MIECHV CAREGIVERS were screened for IPV within 6 months of enrollment in FY 17.²



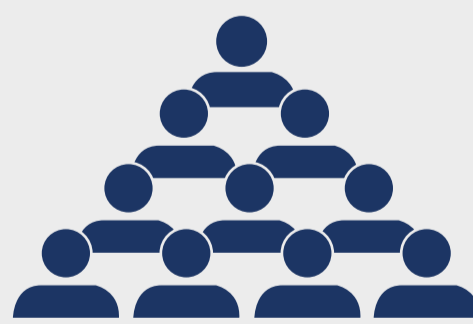
¹ Centers for Disease Control and Prevention: <https://www.cdc.gov/violenceprevention/intimatepartnerviolence/consequences.html>

² Maternal and Child Health Bureau Home Visiting Data: <https://mchb.hrsa.gov/sites/default/files/mchb/MaternalChildHealthInitiatives/HomeVisiting/pdf/programbrief.pdf>

Cancer Prevention

Data Source: BPHC

In 2017:



724,187 PATIENTS received mammograms at HRSA-funded health centers.¹



More than **1.8 MILLION PATIENTS** received Pap smears at HRSA-funded health centers.¹



¹ Bureau of Primary Health Care (BPHC), Uniform Data System (UDS), 2017: <https://bphc.hrsa.gov/uds/datacenter.aspx>

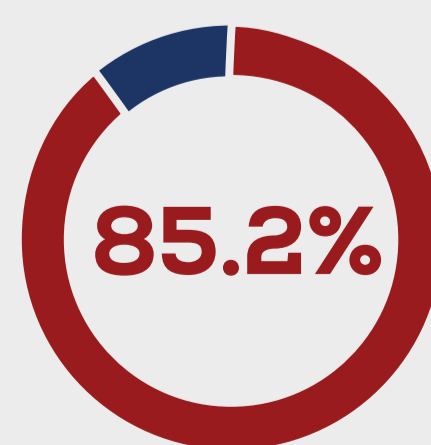
HIV/AIDS Care & Treatment Services through the Ryan White HIV/AIDS Program

Data Source: HAB

In 2017:

145,046

Ryan White HIV/AIDS Program clients were **FEMALE.**¹



Of **FEMALE** Ryan White HIV/AIDS Program clients receiving HIV medical care were **VIRALLY SUPPRESSED.**¹



¹ Ryan White HIV/AIDS Program Annual Client-Level Data Report, 2017. <https://hab.hrsa.gov/data/data-reports>

#NWHW

To learn more, visit www.hrsa.gov/about/organization/bureaus/owh

HRSA
Health Resources & Services Administration