



HRSA Data Warehouse (HDW) – BHW Revamp Project

August 26, 2022

Michael Dembik, Branch Chief, Data Management Branch, Division of Business Operations
Jason Lin, Information Technology Specialist, Division of Business Operations

Vision: Healthy Communities, Healthy People



Agenda

- 1 •— Why did we do this project?
- 2 •— Demo of new BHW pages
- 3 •— What's next?
- 4 •— Committee feedback

Why did BHW do the project?



No lack of interesting material ...



Just hard to find what you are looking for!

Other Reasons

Goals	Drivers
Findability	Stakeholders not aware of the extensive breadth of BHW portfolio
Linkage	Poor linkages between BHW.HRSA.gov and data.HRSA.gov
Connectivity	Lack of connection between BHW programs and portfolio
Grants	Limited presence of BHW grant programs on HDW except BPMH dashboards
Maintenance	Limited data culling and pruning – once added it never went away even if Program or policy changed
Consistency	No consistency across all of BHW's tools <ul style="list-style-type: none">• Query Data• Download Data• Explore Maps• Data Sites

DEMO



What's New?

- New BHW web pages are now live on HDW!
 - Bookmark <https://data.hrsa.gov/topics/health-workforce> and share with colleagues!



- Outreach
 - BHW to demo new web pages at HRSA/PCA Regional Workshops and upcoming NACHC Conference



Coming Soon! Nursing Workforce Tool Dashboards

Coming November 2022!



What are the Nursing Workforce Tool (NWT) Dashboards?

The NWT Dashboards were created to allow viewers to gain a comprehensive understanding of the nursing workforce through visualizing the results of the National Sample Survey of Registered Nurses (NSSRN). Viewers can see aggregate response data for survey questions in a simplified visual format.

How can they help?

The NWT Dashboards can help viewers analyze the survey responses for specific geographic locations, license types, and employment status in order to more accurately understand the composition of the nursing workforce. Filtering ability gives viewers more insight into their individual questions and interests.



Coming Soon! BHW Footprint Map

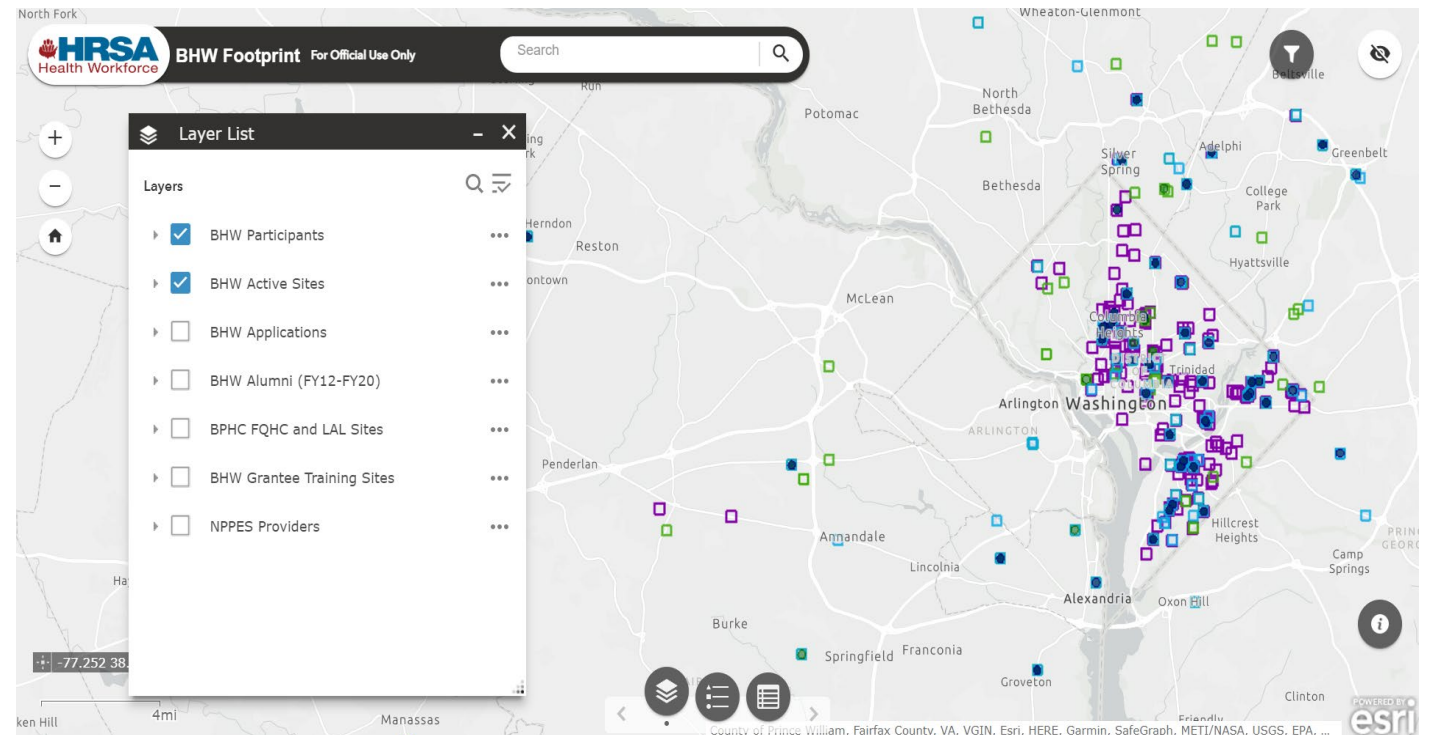
Coming November 2022!

What is the BHW Footprint Map?

This ArcGIS map was created **to allow viewers to see the full landscape of BHW's assets, including sites, participants, applicants, and alumni**, with additional data layers like HPSAs and the NORC Overdose Mortality Rate to **provide operational and strategic context for internal and external stakeholders**

How can it help?

The BHW Footprint Map can help viewers **target resources and outreach** for funding opportunities and potential partners. Data layers can be turned on and off by viewers to focus on answering the questions of most interest to them



Committee Feedback

- What feedback do you have on the new HDW web pages and tools?
- What additional health workforce information would be helpful?
- How can we help bring awareness of these tools to our stakeholders?

Please send any additional comments to BHWData@hrsa.gov



Connect with HRSA

Learn more: [HRSA.gov](https://www.hrsa.gov)

Sign up for HRSA eNews:



Follow us:

