

# Office on Women's Health Maternal Health Updates

---

**Margaret Snyder, MALD**

Lead Public Health Advisor

U.S. Department of Health and Human Services



**OASH**

Office of the  
Assistant Secretary  
for Health

# HHS Racial Equity in Postpartum Care Challenge: Innovative Methods to Improve Postpartum Care for Black or African American and American Indian/Alaska Native Women

---

HHS Racial Equity in Postpartum Care Challenge:  
**Innovative Methods to Improve Postpartum  
Care for Black or African American  
and American Indian/Alaska Native Women**



**OASH**

Office on  
Women's Health



# HHS Endocrine-Disrupting Chemicals (EDC) Innovator Award Competition: Innovative Methods to Address the Impact of Endocrine-Disrupting Chemicals on Black or African American Women

---

HHS Endocrine-Disrupting Chemicals (EDC)  
Innovator Award Competition:

**Innovative Methods to Address the Impact  
of Endocrine-Disrupting Chemicals  
on Black or African American Women**



**OASH**

Office on  
Women's Health



## Maternal Morbidity and Mortality Data and Analysis Initiative

Improve maternal health data to advance health equity

Create a network of 200+ hospitals deploying evidence-based practices



## **Improve Maternal Morbidity and Mortality Data: *National Maternal Infant Analysis***

---

1. Data Collection Analysis and Reporting
  - **Analysis of up-to-date and ongoing data on maternal and infant mortality**
  - **Nationally representative**
  - **Standardized inpatient data and hospital discharge data platform**

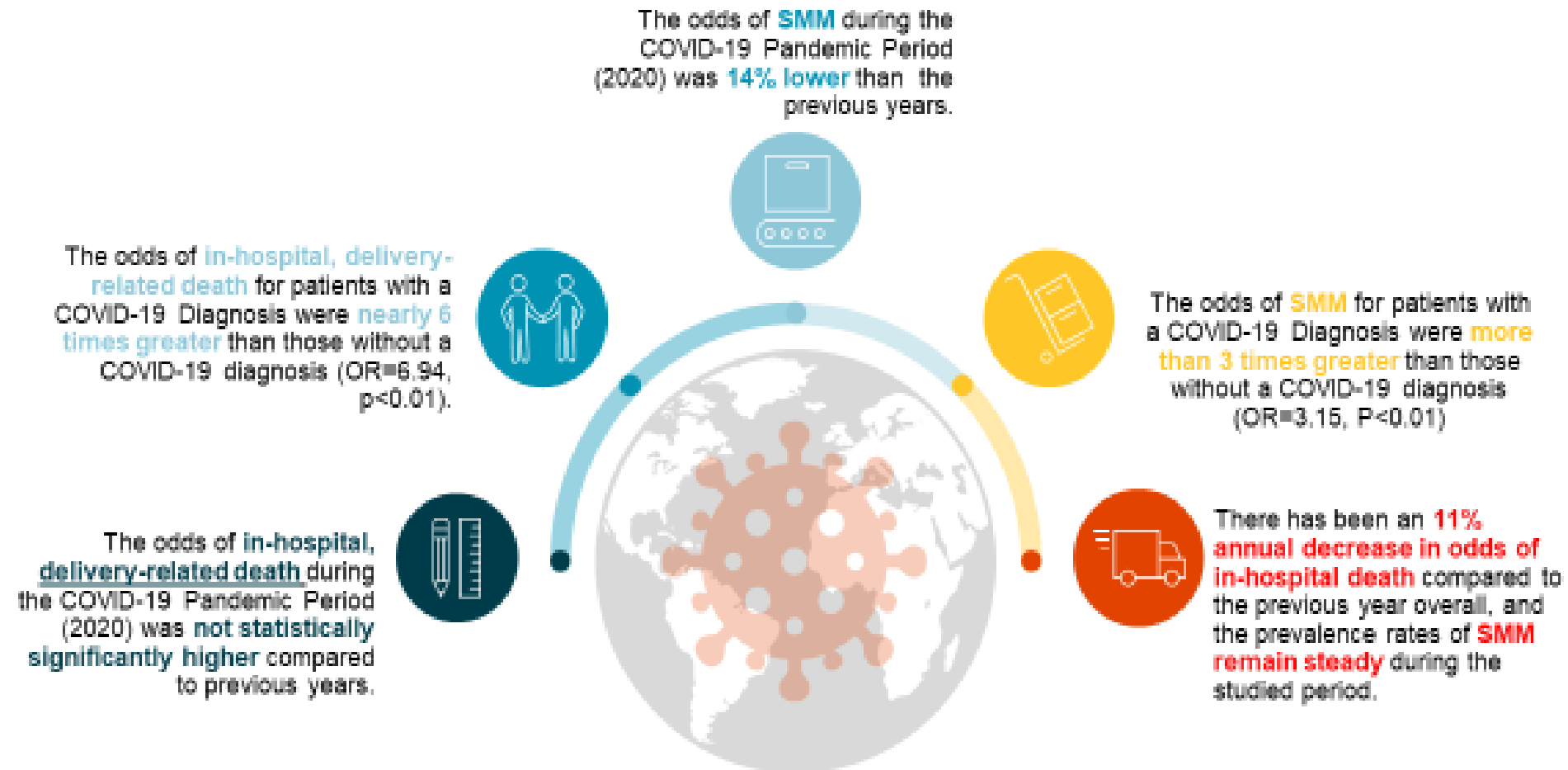
## **Improve Maternal Morbidity and Mortality Data: *National Maternal Infant Analysis, cont.***

---

Data include:

- **National baseline of maternal infant outcomes 2008 – present**
- **Relationships between maternal and infant data**
- **Association of age, race, ethnicity, cesarean rate, co-morbidities including obesity, hypertension, and diabetes as well as any other relevant contributing conditions**

# The COVID-19 Pandemic Impacts Outcomes for the Maternal Delivery Population



## **Improve Maternal Morbidity and Mortality Data: *Perinatal Collaborative***

---

### 2. Implementation and Analysis of Evidence-Based Interventions

- **Recruitment of at least 200 diverse birthing hospitals to join the collaborative**
- **Defined areas of focus – overarching disparities considerations**
- **Individualized hospital performance improvement support**



# HHS Perinatal Improvement Collaborative

A collaborative of hospitals and health systems

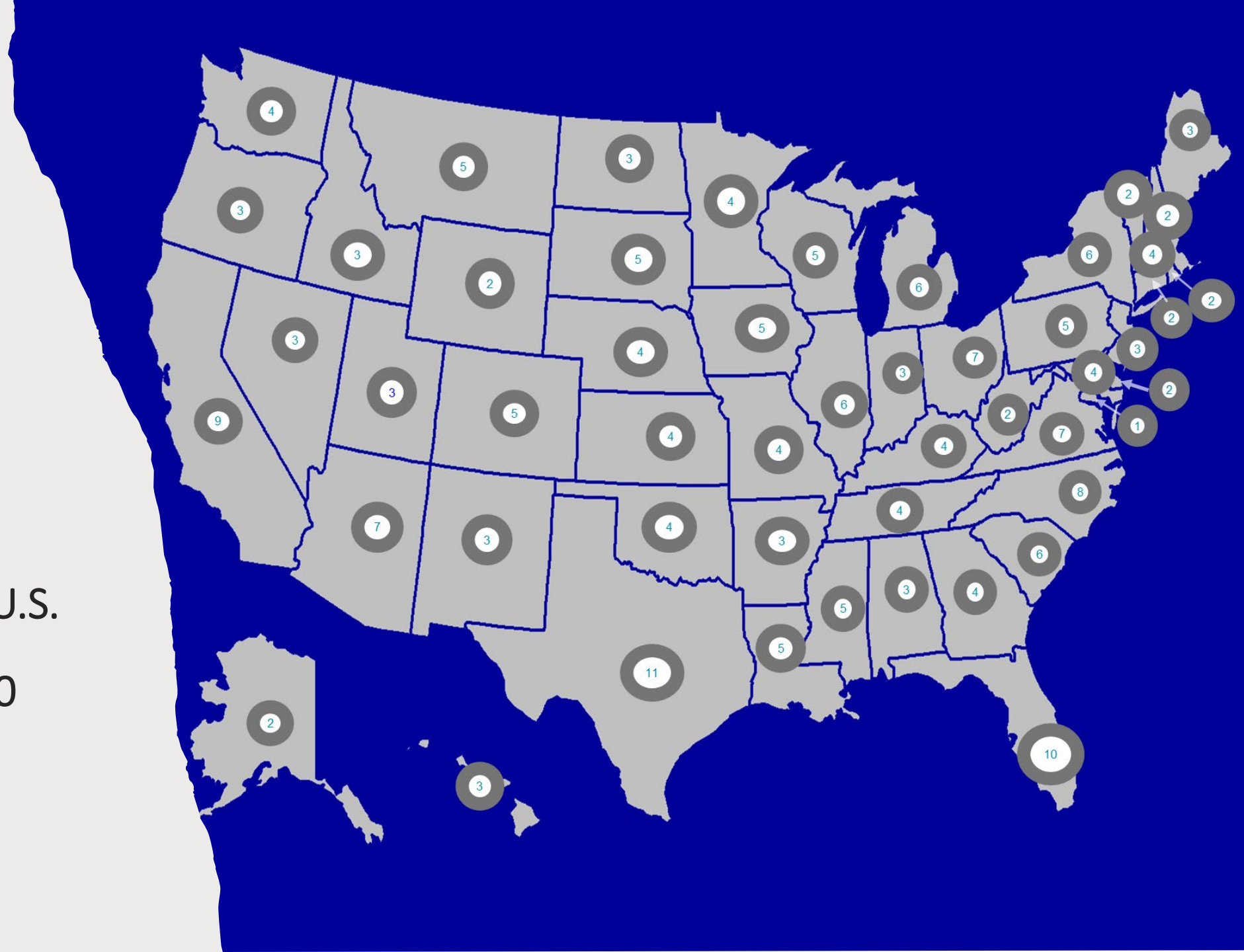
- **Multi-year initiative**
- **Aligns and augments national strategies**
- **Measurable deliverables:**
  - ✓ Perinatal Collaborative Outcome Dashboard
  - ✓ Measurable High Reliability Site Assessment
  - ✓ Individualized Improvement Roadmap

Key partnerships with **MoMMA's Voices** and **National Birth Equity Collaborative (NBEC)**



## HHS Perinatal Improvement Collaborative:

- 220 diverse U.S. hospitals
- Over 500,000 births / year



The initiative assesses the efficacy **evidence-based interventions** on **maternal infant** morbidity and mortality. The following outcome areas of focus are included with overarching considerations on **health equity** including **disparities** and **social determinants**.

---

1. Hypertensive Disorders of Pregnancy
2. Cesarean Birth
3. Cardiovascular Conditions
4. Diabetes in Pregnancy
5. Obstetric Hemorrhage
6. Maternal Mental Health
7. Substance Use Disorders
8. Neonatal Abstinence (NAS)
9. Prematurity
10. Sepsis and Infections including COVID-19
11. VTE Prevention
12. Breastfeeding
13. Culture of Safety and Team Dynamics
14. Regulatory and Accreditation
15. Maternal Levels of Care
16. Postpartum Care
17. Severe Maternal Morbidity
18. Support After a Severe Event
19. Shoulder Dystocia
20. Social Determinants
21. Health Equity
22. Risk and Adverse Events
23. Care Variation – Efficiency

**Over 150 outcome measures captured** to understand clinical and non-clinical factors impacting overall maternal infant outcomes.

***Linked Maternal Infant Analysis***

## Two-Pronged Approach: Data Analysis and Collaborative

---

Identify drivers of maternal mortality and morbidity  
and **implement solutions** to make America the safest place to have a baby.

### *Perinatal Improvement Collaborative*

*Data-Driven Collaborative  
of 200+ Hospitals to Scale  
Evidence-Based Care  
Practices*

This cohort includes hospitals that serve patients with greater disparities and health barriers.

### *National Maternal Infant Analysis*

*Data-Driven Insights on Key  
Drivers of Harm and Death*

Leverages data to analyze and pinpoint the root causes of morbidity and mortality.



**OASH**

Office of the  
Assistant Secretary  
for Health

---

[WWW.HHS.GOV/ASH](http://WWW.HHS.GOV/ASH)

[WWW.WOMENSHEALTH.GOV](http://WWW.WOMENSHEALTH.GOV)

[WWW.GIRLSHEALTH.GOV](http://WWW.GIRLSHEALTH.GOV)

[@WOMENSHEALTH](https://twitter.com/WOMENSHEALTH)