

# Sample OPO Allocation Compliance Report

With ongoing collaboration from the OPTN, HRSA produces monthly Allocation Compliance Reports for each organ procurement organization (OPO). This document is a sample report describing organ allocation practices for a hypothetical OPO, designated "OPO-X."

To protect patient privacy, individual reports for actual OPOs are not publicly available because they generally contain small sample sizes. For example, if an OPO procured and transplanted only one liver in a given month, information in the report could potentially be connected to the donor or recipient patient. The sample report below uses the same template as the OPO Allocation Compliance Reports produced for the OPTN.

---

***This report was produced by the Health Resources and Services Administration (HRSA).***

The purpose of this report is to describe OPO-specific organ allocation practice and compliance with OPTN policy. This report was developed by the HRSA, as requested by the OPTN Board of Directors, including the Membership and Professional Standards Committee (MPSC) and the Allocation Out of OPTN Sequence (AOOS) Workgroup. Each analysis section below shows an analysis requested by the OPTN.

For more information on allocation out of OPTN sequence, see the [OPTN AOOS website](#).

# Contents

## I. About the data

## II. Analyses

### A. AOOS

- i. Rate of AOOS overall and by organ, compared to national rate
- ii. Rate of AOOS by code and/or reason, compared to national rate
- iii. Percentage of AOOS going to different hospitals
- iv. Number of transplant hospitals offered the organ prior to first AOOS sequence
- v. Earliest sequence number of AOOS bypass codes
- vi. Accepting sequence of OOS allocations
- vii. KDPI of kidneys allocated out of OPTN sequence

### B. Procurement and utilization

- i. Number of in-OPTN-sequence allocations that resulted in organ non-use
- ii. Rate of organ non-use overall and by organ, compared to national rate
- iii. Number of donors

### C. Local factors

- i. Number of transplant hospitals and their acceptance rates within 250 nautical mile radius

## I. About the data

The data shown in this report are the same data used to produce the AOOS dashboard accessible [on the OPTN website](#). **The OPTN is in the process of creating a consensus AOOS dataset** for use by the transplant community. When that dataset is available, this report will be updated to use consensus data. **AOOS is assessed according to the OPTN's analytical definition.**

OPOs are required to report organ offer outcomes, including bypass codes, within 30 days of the match run date. (See OPTN Policy 18.3 for more detail.) Because data are largely incomplete within this 30-day reporting period, this report shows results with a one-month delay from the data as-of date:

**Report generated:** January 13, 2026

**OPTN data as of:** January 1, 2026

**Allocations shown:** December 1, 2024 to November 30, 2025

## II. Analyses

### II.A. AOOS

#### II.A.i. Rate of AOOS overall and by organ, compared to national rate

This table shows the total number of allocations performed by OPO-X between December 1, 2024 and November 30, 2025 and the proportion of those allocations that were out of OPTN sequence according to [the OPTN's analytical definition of AOOS](#).

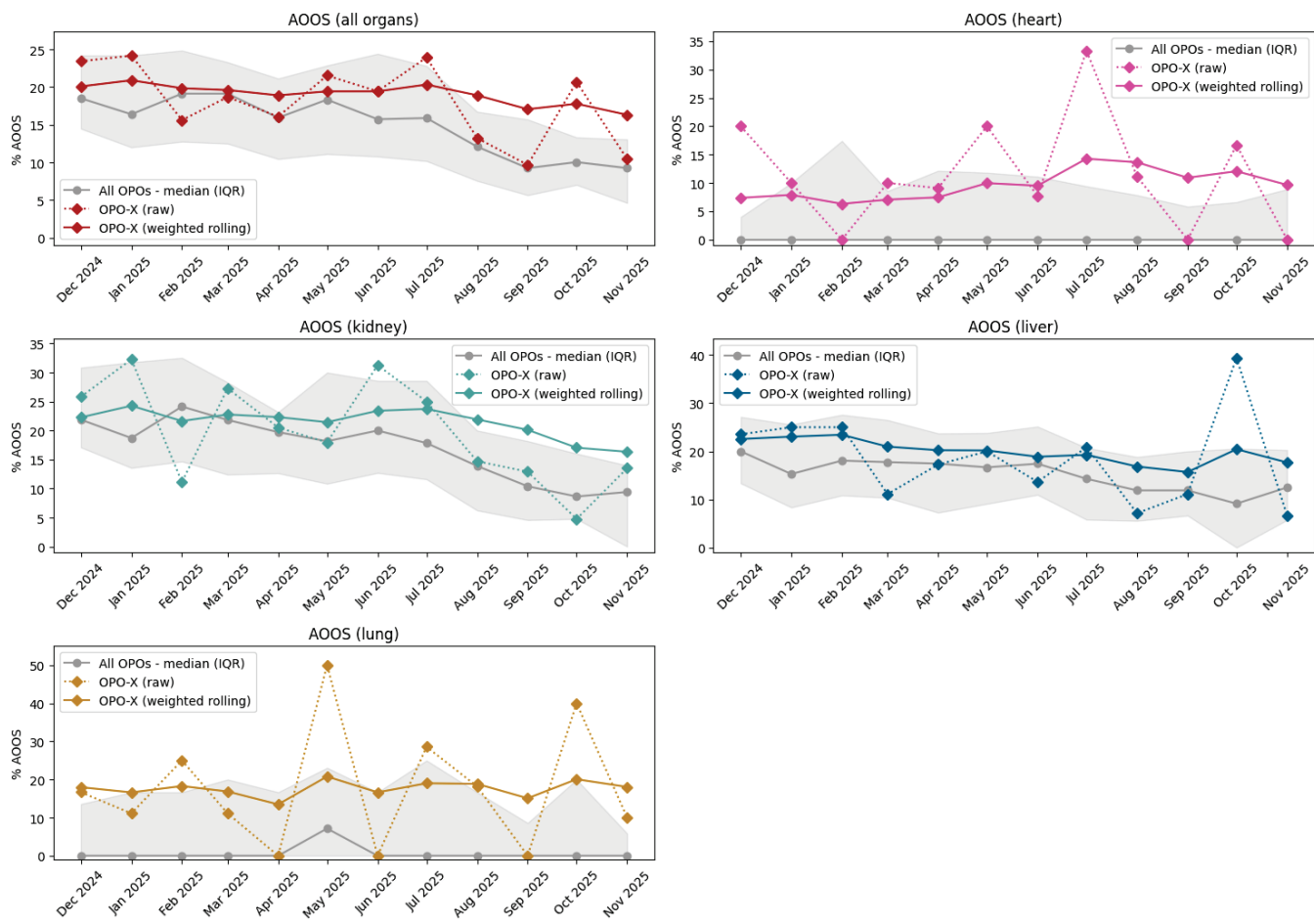
AOOS rank is ordered from the highest AOOS rate (1st) to the lowest (55th).

	Organ	All Organs	Heart	Intestine	Kidney	Liver	Lung	Pancreas
<b>Total OPO-X allocations</b>		856	98	0	421	249	84	4
<b>AOOS OPO-X allocations</b>		156	10	0	83	49	14	0
<b>OPO-X % AOOS</b>		18.2%	10.2%	n/a	19.7%	19.7%	16.7%	0.0%
<b>All OPOs median % AOOS</b>		15.5%	4.9%	n/a	18.5%	16.1%	10.7%	0.0%
<b>AOOS rank (out of 55 OPOs)</b>		21st	10th	n/a	23rd	15th	12th (tie)	9th (tie)

This graph shows the proportion of all OPO-X allocations that were AOOS in the months shown.

Technical details:

- The median AOOS rate each month across all OPOs is shown in gray, and the shaded region shows the interquartile range.
- The dotted line shows raw per-month values for OPO-X.
- The solid line shows a weighted rolling average of OPO-X AOOS rates, which gives more weight to more recent months (EWMA with alpha=0.2).
- Only organs with at least five allocations per month are shown.



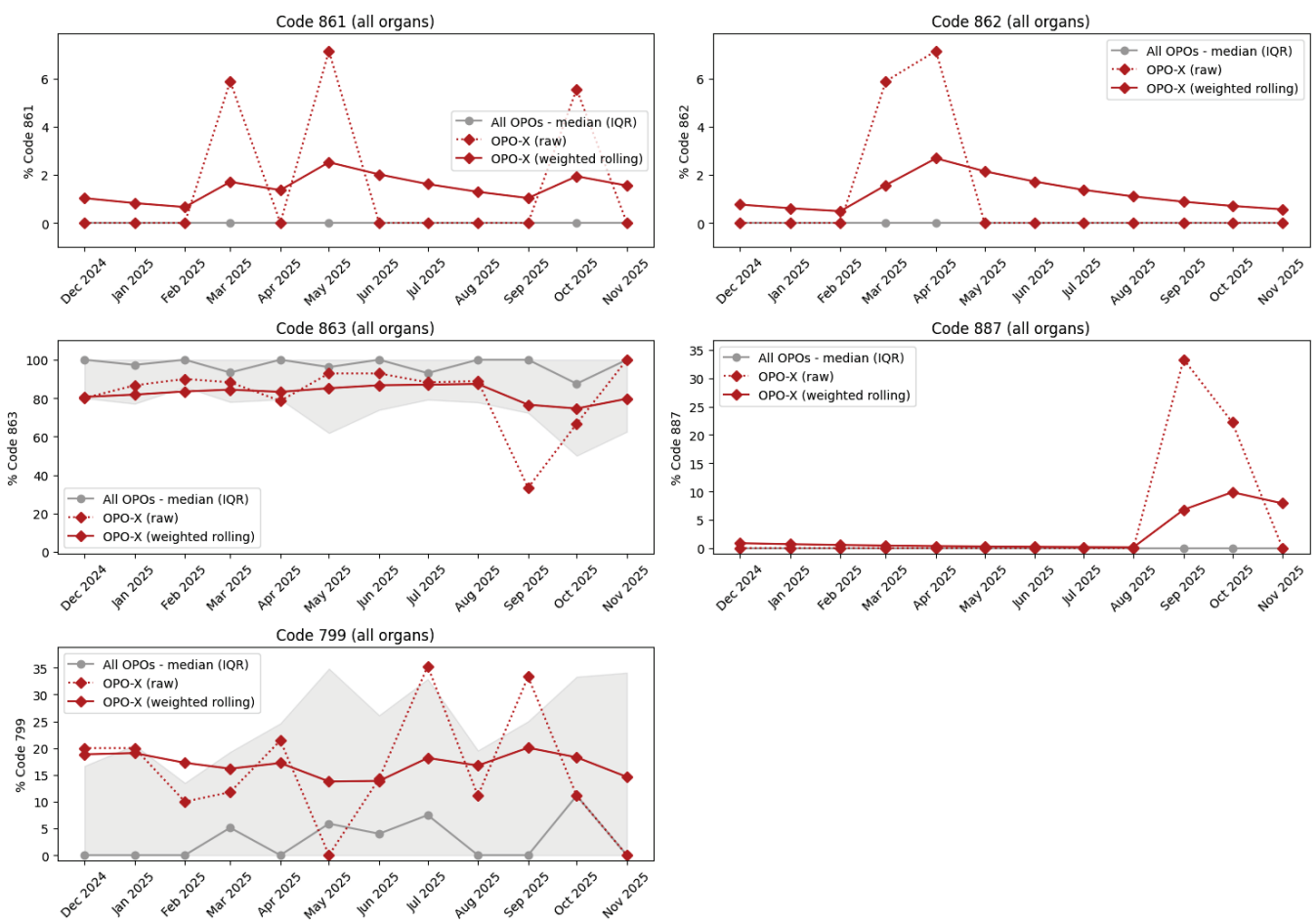
## II.A.ii. Rate of AOOS by code and/or reason, compared to national rate

This graph shows the proportion of OOS allocations that included the specified code for the specified OPO in the months shown. These codes are defined in [the OPTN's analytical definition of AOOS](#) and include:

- **861:** Operational - OPO
- **862:** Donor medical urgency
- **863:** Offer not made due to expedited placement attempt
- **887:** Not Offered - expedited placement
- **799:** Other, specify

Technical details:

- The median AOOS rate each month across all OPOs is shown in gray, and the shaded region shows the interquartile range.
- The dotted line shows raw per-month values for OPO-X.
- The solid line shows a weighted rolling average of OPO-X code usage, which gives more weight to more recent months (EWMA with  $\alpha=0.2$ ).



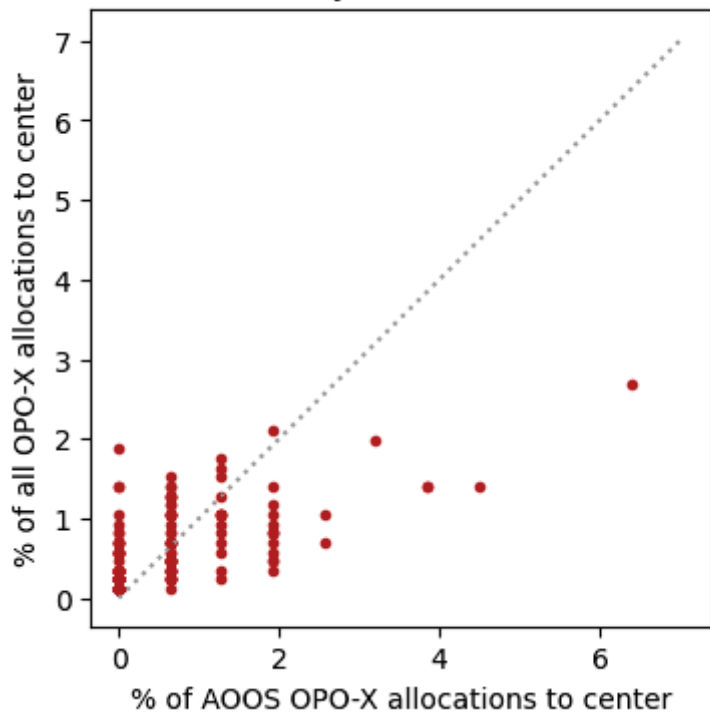
## II.A.iii. Percentage of AOOS going to different hospitals

This table shows OPO-X's top five hospitals for AOOS allocation, and the proportion of OPO-X's allocations (AOOS or overall) that they receive.

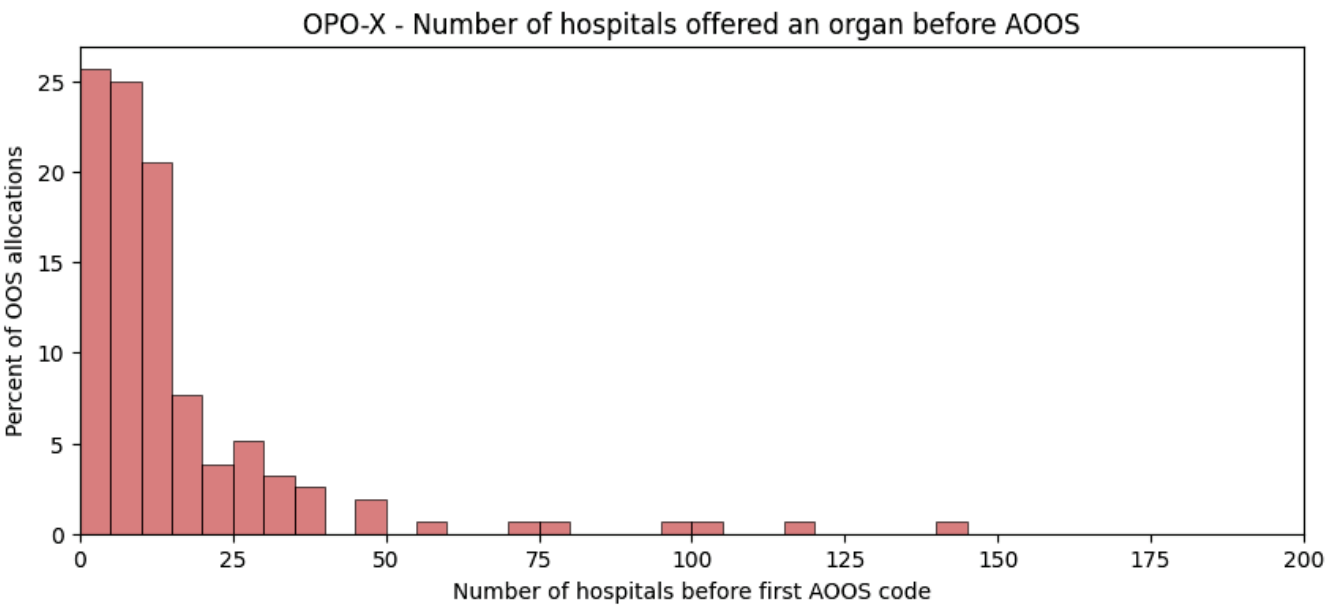
Hospital	OPO-X AOOS	OPO-X Overall
CTR-A	6.4%	2.7%
CTR-B	4.5%	1.4%
CTR-C	3.8%	1.4%
CTR-D	3.8%	1.4%
CTR-E	3.2%	2.0%

In this graph, each point represents a center. The x-axis shows what percentage of OPO-X's AOOS allocations go to that center. The y-axis shows what percentage of OPO-X's overall allocations go to that center. If a point falls on the dotted line, that center receives the same percentage of overall allocations and of AOOS allocations from OPO-X.

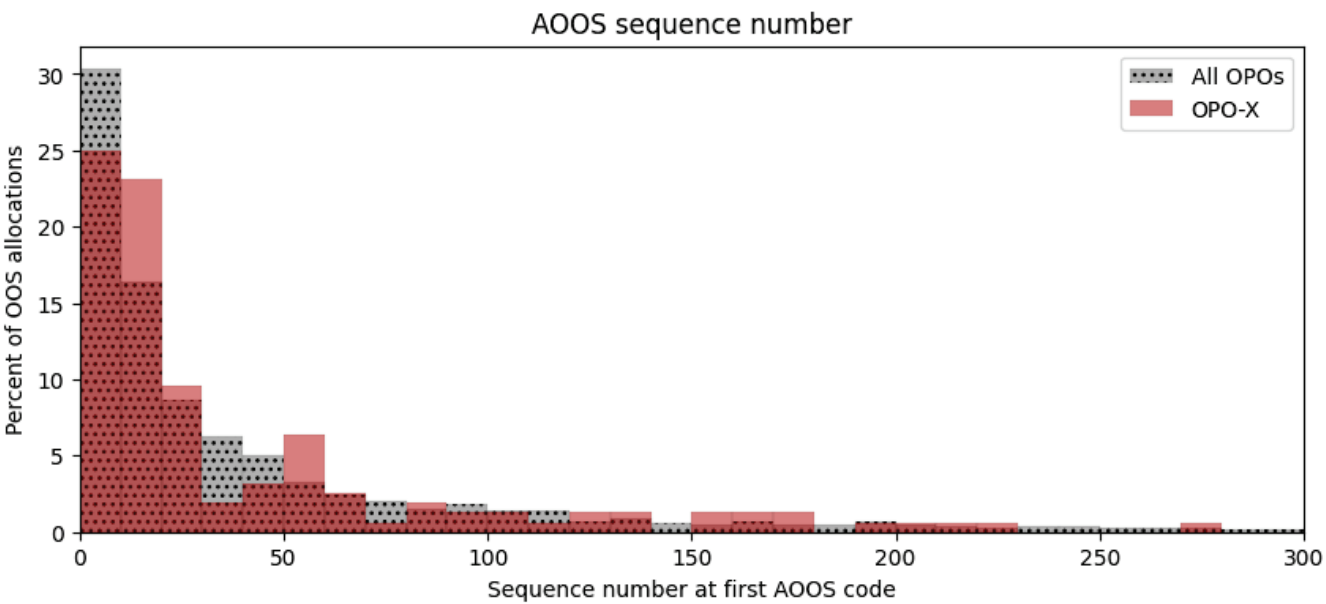
OPO-X allocation by center - AOOS vs. overall



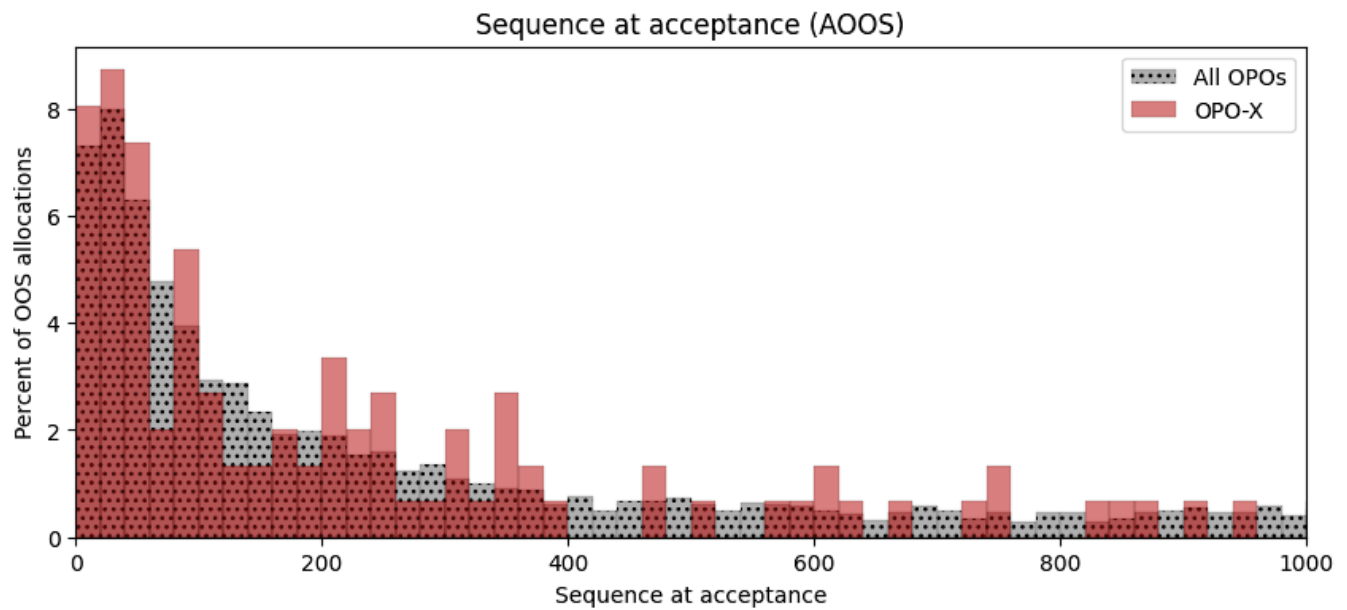
II.A.iv. Number of transplant hospitals offered the organ prior to first AOOS sequence



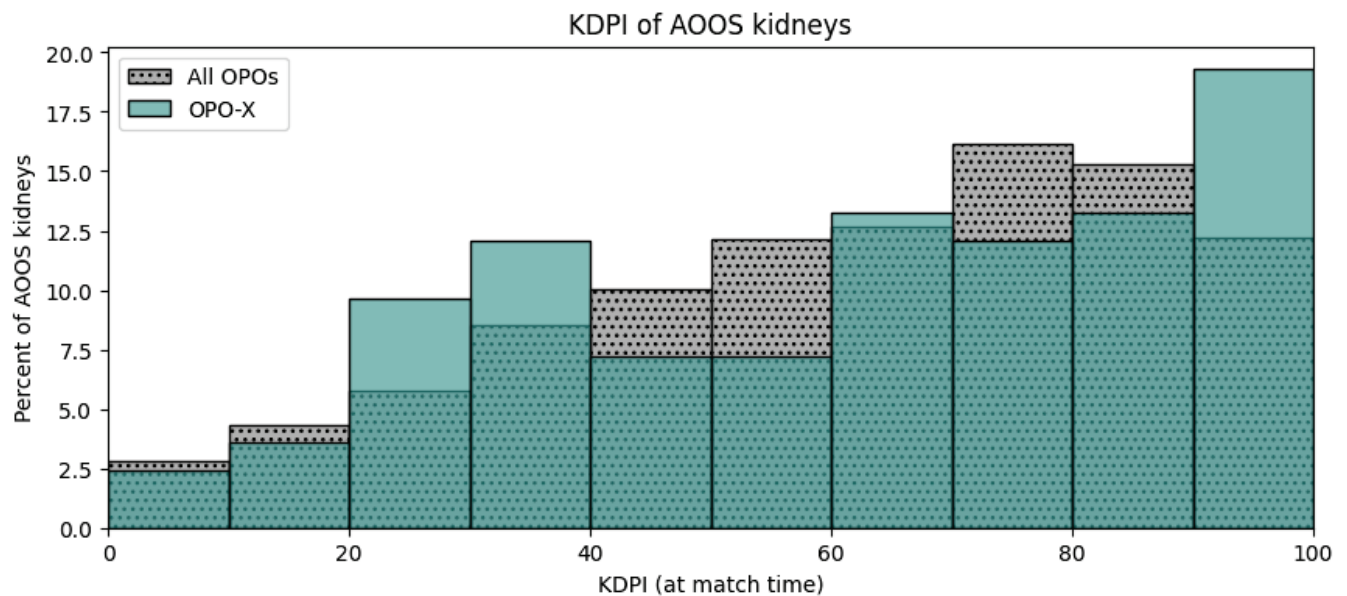
II.A.v. Earliest sequence number of AOOS bypass codes



II.A.vi. Accepting sequence of OOS allocations



## II.A.vii. KDPI of kidneys allocated out of OPTN sequence



## II.B. Procurement and utilization

### II.B.i. Number of in-OPTN-sequence allocations that resulted in organ non-use



**Note:** The dataset used to produce this report includes organs that were accepted and/or transplanted, in or out of OPTN sequence. It does not include organs that were recovered but never offered, nor organs that were recovered and offered but never accepted. Therefore, this represents an underestimate of total organ non-use.

**Note:** Because more than one organ may be allocated in a single allocation event (e.g. for KP or MOT), the number of organs allocated in or out of OPTN sequence (shown here) may be greater than the number of in- or out-of-OPTN-sequence allocation events (shown above).

Dispositions of **710** organs allocated in OPTN sequence by OPO-X between December 1, 2024 and November 30, 2025:

- Recovered for transplant, not transplanted: **3**
- Transplanted: **693**
- No disposition recorded: **14**

Dispositions of **156** organs allocated out of OPTN sequence by OPO-X between December 1, 2024 and November 30, 2025:

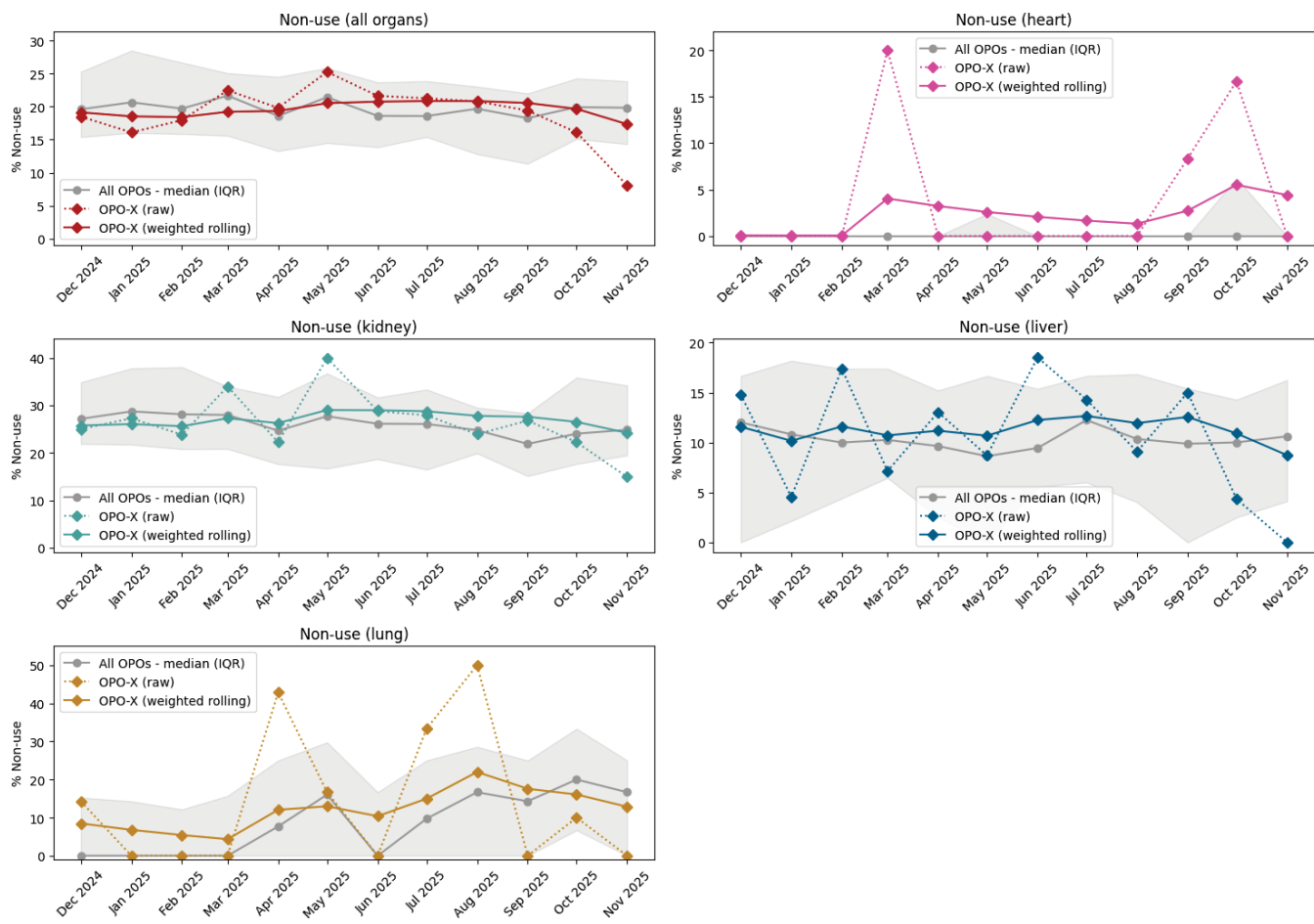
- Transplanted: **154**
- No disposition recorded: **2**

## II.B.ii. Rate of organ non-use overall and by organ, compared to national rate

This graph shows the non-use rate for all organs procured by OPO-X in the months shown.

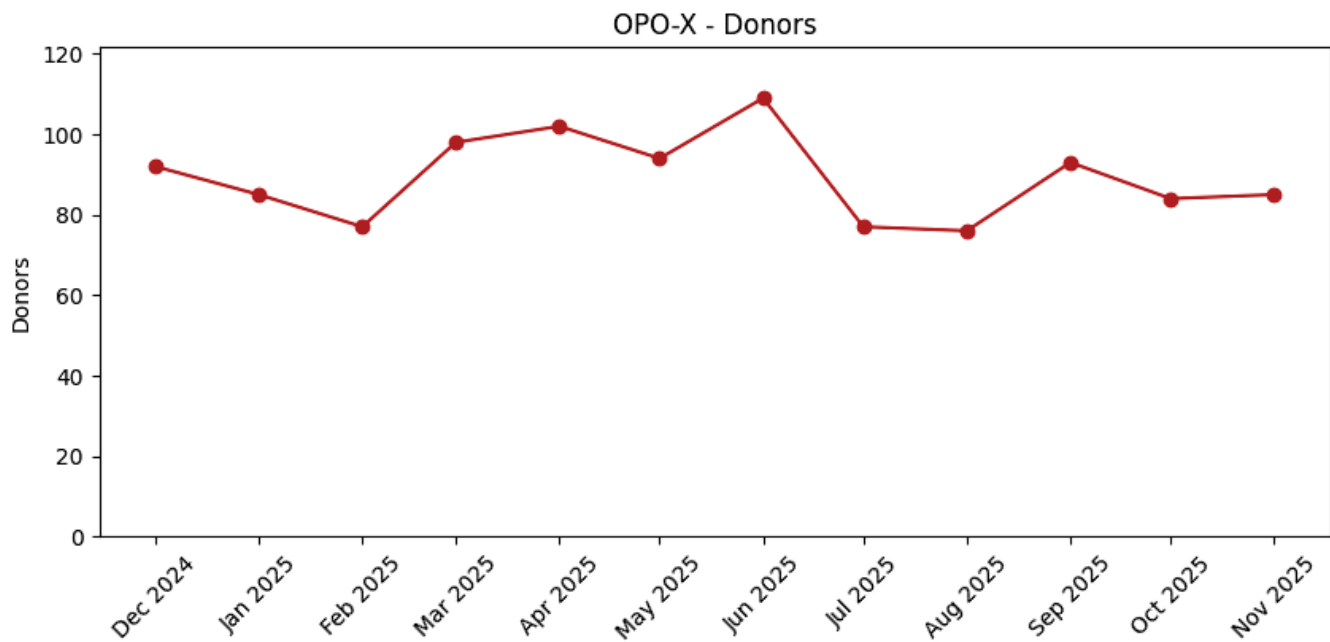
Technical details:

- The median non-use rate each month across all OPOs is shown in gray, and the shaded region shows the interquartile range.
- The dotted line shows raw per-month values for OPO-X.
- The solid line shows a weighted rolling average of OPO-X non\_use rates, which gives more weight to more recent months (EWMA with  $\alpha=0.2$ ).
- Organs are counted per graft: For split organs (including liver, pancreas, and intestine), each resulting graft is counted separately. En bloc kidney and double lung transplants are counted as single grafts.
- For parity with AOOS graphs above, only organs with at least five allocations per month are shown.



## II.B.iii. Number of donors

This graph shows the number of donor patients from whom OPO-X recovered at least one organ for transplant.



## II.C. Local factors

### II.C.i. Number of transplant hospitals and their acceptance rates within 250 nautical mile radius

These tables show all transplant programs that appeared on a match run by OPO-X in the evaluation period, where the potential recipient's transplant center was within 250 NM of the donor hospital. There is one table per program type, with columns:

- **Center:** OPTN code of the transplant center
- **Program:** Organ type of the transplant program
- **Average distance (NM):** Distance in nautical miles between the donor hospital and recipient center, averaged over all offers made to this transplant program by OPO-X in the evaluation period
- **% of offers within 250NM:** Of all offers made to this transplant program by OPO-X in the evaluation period, the proportion for which the distance between the donor hospital and recipient center was within 250 NM
- **Offer acceptance ratio:** The offer acceptance ratio of the transplant program as of the most recent Program-Specific Report

	Center	Program	Average distance (NM)	% of offers within 250 NM	Offer acceptance ratio
1	CTR-X	HR	65	100%	0.63
2	CTR-X	HR	115	100%	nan
3	CTR-X	HR	128	100%	2.34
4	CTR-X	HR	142	89%	0.76
5	CTR-X	HR	153	77%	1.58
6	CTR-X	HR	158	95%	3.23
7	CTR-X	HR	215	100%	1.2
8	CTR-X	HR	220	50%	0.4
9	CTR-X	HR	229	100%	0.75
10	CTR-X	HR	243	100%	0.46

	Center	Program	Average distance (NM)	% of offers within 250 NM	Offer acceptance ratio
1	CTR-X	KI	76	100%	0.84
2	CTR-X	KI	97	100%	0.24
3	CTR-X	KI	114	100%	1.36
4	CTR-X	KI	135	92%	0.38
5	CTR-X	KI	135	100%	1.02
6	CTR-X	KI	138	97%	1.13
7	CTR-X	KI	142	96%	0.97
8	CTR-X	KI	146	93%	0.29
9	CTR-X	KI	155	96%	2.15
10	CTR-X	KI	161	94%	1.57

	Center	Program	Average distance (NM)	% of offers within 250 NM	Offer acceptance ratio
1	CTR-X	KP	54	100%	0.4
2	CTR-X	KP	118	100%	0.63
3	CTR-X	KP	125	95%	1.43
4	CTR-X	KP	147	98%	0.6
5	CTR-X	KP	174	100%	1.1
6	CTR-X	KP	183	100%	0.56
7	CTR-X	KP	211	83%	1.08
8	CTR-X	KP	218	100%	1.17
9	CTR-X	KP	224	100%	nan
10	CTR-X	KP	278	12%	0.95

	Center	Program	Average distance (NM)	% of offers within 250 NM	Offer acceptance ratio
1	CTR-X	LI	45	100%	0.41
2	CTR-X	LI	70	100%	0.98
3	CTR-X	LI	135	90%	0.76
4	CTR-X	LI	141	89%	1.2
5	CTR-X	LI	167	85%	1.09
6	CTR-X	LI	185	100%	0.68
7	CTR-X	LI	187	100%	1.53
8	CTR-X	LI	187	77%	0.53
9	CTR-X	LI	197	63%	0.87
10	CTR-X	LI	198	85%	0.92

	Center	Program	Average distance (NM)	% of offers within 250 NM	Offer acceptance ratio
1	CTR-X	LU	101	100%	0.29
2	CTR-X	LU	179	70%	0.52
3	CTR-X	LU	201	67%	1.71
4	CTR-X	LU	254	32%	0.45
5	CTR-X	LU	325	1%	1.09
6	CTR-X	LU	333	2%	1.09
7	CTR-X	LU	334	23%	1.19
8	CTR-X	LU	345	19%	0.78
9	CTR-X	LU	207	62%	0.86
10	CTR-X	LU	233	62%	0.82